

ISSUE 02 - 2025

INSIDE K&A

Khatib & Alami Newsletter

DESIGNING A BETTER WORLD TOGETHER

IN THIS ISSUE:

How an Award-Winning Digital Strategy is Reshaping AEC • K&A Earns Great Place To Work® Certification in Saudi Arabia • GeoAI for National Water Forecasting in Bahrain • Riva Residence Tower Elevating Waterfront Living in Dubai • For People and Planet: How K&A Is Delivering on ESG



A NOTE FROM OUR CHAIRMAN AND CEO



Future cities are being built today, and we are proud to be at the forefront of this global urban transformation. As digital economies take hold, the built environment is evolving rapidly, from smart developments to fully connected cities where cutting-edge technologies maximize sustainability and are seamlessly woven into infrastructure and daily life.

At the heart of every smart city lies a deeper ambition: not just to be technologically advanced, but to elevate the human experience while fostering sustainable urban development. Around the world, urban populations are growing at unprecedented rates. Citizens no longer hope for cleaner air, safer transport, and equitable access to essential services—they expect it. In response, governments face increasing pressure to create cities that not only address today's needs but also anticipate the demands of tomorrow, including climate resilience, resource efficiency, and social equity.

The convergence of Operational Technology, Information Technology, and Engineering Technology is transforming urban development—and marks a pivotal step in Khatib & Alami's (K&A) evolution into a comprehensive digital solutions provider. By integrating geospatial intelligence, urban analytics, and advanced technologies with multidisciplinary expertise in architecture, engineering, and construction (AEC), K&A creates adaptive platforms that meet the evolving needs of modern cities. Our teams utilize AI, IoT, generative design, and digital twins to enhance urban planning, construction, and operations by optimizing performance, reducing costs, and delivering sustainable solutions across the project lifecycle.

As proud recipients of the Digital Transformation of the Year award, we continue to integrate next-generation technologies to set new benchmarks in digital delivery. The pioneering use of GeoAI in Bahrain's Water Master Plan to forecast future population demand is just one example of how our specialists have leveraged artificial intelligence and geospatial data to turn innovation into tangible outcomes that support both community wellbeing and long-term environmental goals. In Saudi Arabia, flagship projects such as the Urban Data Center for Riyadh and our work with NEOM and ENOWA demonstrate how K&A drives smarter, greener, more resilient, and human-centric cities through data, real-time insights, and unified digital platforms.

At the core of our digital evolution lies a deep-rooted commitment to sustainability, seamlessly integrated into every stage of our project lifecycle. We go beyond regulatory compliance, embracing a forward-looking vision that integrates smart technologies, sustainable engineering practices, and responsible material use to reduce environmental impact and enhance wellbeing. Our teams actively develop programs aligned with international standards such as LEED, using data-driven tools to optimize energy use, waste management, mobility, healthcare, and water systems. By aligning innovation with sustainability, we not only support communities and the planet but also create long-term value through efficiency, resilience, and smarter urban living.

Beyond technology, K&A is deeply committed to empowering local talent through workforce development, knowledge transfer, and capacity building—key pillars of sustainable development. Our network of design centers, strategically located in KSA, UAE, Lebanon, Egypt, and India, is seamlessly integrated into our global delivery model. These centers serve as hubs of innovation, nurturing the next

generation of professionals in architecture, engineering, and digital services, while contributing significantly to mega projects across our key markets.

This dedication has been recognized through recent honors, including the Great Place To Work® certification in Saudi Arabia and the Engineering Consultancy of the Year award at the Big 5 Egypt Impact Awards 2025, awarded for transformative, sustainability-led projects such as the Cairo Light Rail Transit and Safaga Port. These accolades highlight the strength of our teams and the trust our clients place in us for building better, more sustainable cities.

As K&A advances through 2025 with a robust project pipeline and a highly skilled team, our focus sharpens on deepening partnerships, expanding our global presence, and pushing the boundaries of what's possible in the built environment. This newsletter highlights our continued efforts—from the rehabilitation of Beirut Airport Road to the design of Dubai Maritime City's Riva Residence, and strategic collaborations with Omantel. We are also advancing our ESG commitments, aligning with international sustainability frameworks and global best practices to ensure our work creates lasting value for people, communities, and the planet.

Thank you for reading this newsletter. K&A looks forward to working with partners, clients, and leaders who share our vision of building cities where technology and innovation create opportunities for all.

Connect with us to explore how we can work together to turn this vision into reality.

Najib Khatib, Ph.D.
Chairman & CEO

IN THIS ISSUE



06
DIGITAL TRANSFORMATION
How an Award-Winning Digital Strategy is Reshaping AEC

Sales Excellence Award by Schneider Electric

Khatib & Alami Renews BSI Kite-mark™ Certification for Excellence in BIM Delivery

10
AWARD | KSA
K&A Earns Great Place To Work® Certification in Saudi Arabia

11
INDUSTRY RANKING
Dr. Najib Khatib Ranked Among Top 5 Consultants in Construction Week Middle East's 2025 Power 150 List

12
CASE STUDY
GeoAI for National Water Forecasting in Bahrain

14
MARKET FOCUS | EGYPT
Engineering the Future: K&A's Impact on Sustainable Infrastructure and Digital Transformation

18
DIGITAL INFRASTRUCTURE | KSA
Riyadh Urban Data Center: Laying the Digital Foundation for Cognitive Urbanism

20
RESIDENTIAL | UAE
Riva Residence Tower Elevating Waterfront Living in Dubai



24
INTERVIEW | NIK ROWLEY
Beyond Compliance: A Conversation with Nik Rowley on the Future of HSE

26
REHABILITATION | LEBANON
Beirut Airport Road Rehabilitation Project Officially Begins

28
GIS | OMAN
50 Years in Oman: Pioneering GIS and Driving National Development



32
DIGITAL TRANSFORMATION | TELECOM
Omantel Partners with Khatib & Alami to Advance GIS Network Planning

33
OPINION
Reimagining Tourism: Smart Destinations and the Future of Urban Travel

36
ESG STRATEGY
For People and Planet: How K&A Is Delivering on ESG





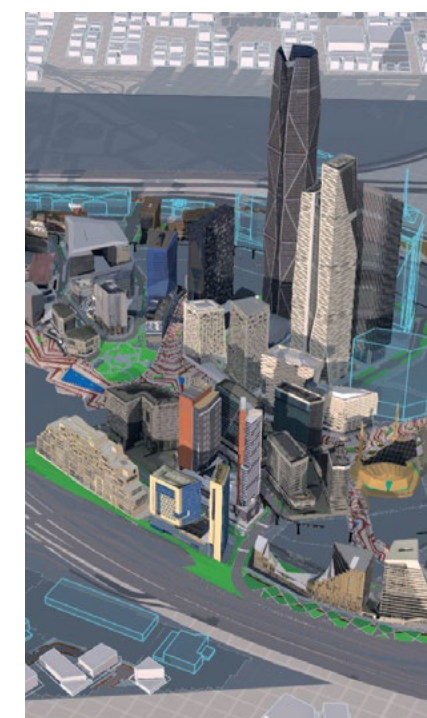
DIGITAL TRANSFORMATION

HOW AN AWARD-WINNING DIGITAL STRATEGY IS RESHAPING AEC

Khatib & Alami (K&A) is transforming how the built environment is designed, managed, and experienced. With a clear vision for digital innovation and a strategy rooted in emerging technologies, we have become a regional leader in shaping smarter, more resilient cities.

As the 2025 winner of the Digital Transformation of the Year award at the Construction Technology Awards, K&A has been recognized for its outstanding commitment to reshaping urban development through advanced technologies, strategic vision, and measurable results. From the dense urban skyline of Riyadh's King Abdullah Financial District (KAJD) to the vast terrain of Dhofar in Oman, we are leveraging advanced tools to drive smarter decisions and sustainable outcomes. Our digital transformation strategy integrates Building Information Modeling (BIM), Geographic Information Systems (GIS), Artificial Intelligence (AI), Internet of Things (IoT), and Machine Learning (ML) into a cohesive digital delivery platform that supports every phase of the project lifecycle.

At KAJD, K&A developed a sophisticated Digital Twin encompassing more than 50 towers and public spaces, merging BIM, GIS, LiDAR, and 360° imaging. This integrated model enables real-time facility monitoring, predictive maintenance, and operational efficiency, offering a living digital asset that evolves with the district. ■





Meanwhile, as Executive Architect for Grand Hyatt The Red Sea, our team led the digital delivery of a highly complex development by implementing advanced Autodesk solutions such as Revit, BIM 360, Navisworks, and Civil 3D to ensure seamless collaboration among 20+ global stakeholders. We developed and managed a fully coordinated, federated BIM model, achieving a conflict-free design process while enabling automated quality checks, issue tracking, and real-time updates. By integrating digital workflows and in-house automation tools, we reduced design turnaround times by up to 50% and significantly enhanced sustainability through optimized material usage and reduced waste. Our work also contributed to LEED v4.1 Cities: Plan and Design Platinum accreditation, which RSG achieved for The Red Sea Master Plan.

Perhaps the most striking is K&A's innovative use of GeoAI—a powerful fusion of geospatial analytics and deep learning that transforms remote sensing into a precise, automated tool for urban analysis. As part of the Bahrain Water Master Plan, we leveraged GeoAI to

extract building footprints and analyze urban growth patterns over time, enabling the development of accurate population distribution models that support smarter planning and future development forecasting.

In Oman, where traditional field surveys faced social and logistical challenges, K&A led the development of a 760 km² Urban Landbank using aerial imagery and AI-powered GIS. Within just 16 months, five custom deep learning models identified over 10,000 buildings and 13,000 fences with a precision of 10 cm, compressing what would normally be a decade-long process into a cost-efficient, high-accuracy digital solution. This project not only reduced costs by over 90% but also



demonstrated how AI can unlock new possibilities in national planning and geospatial governance.

These achievements reflect a broader shift across K&A's portfolio—from reactive design to proactive, data-informed development. Internally, we've built a robust digital backbone, powered by cloud-based systems, resource automation, and a custom BIM Management Portal that supports real-time coordination across multidisciplinary teams and design centers. Through tools like Revit/Dynamo, generative design engines, and sustainability simulations, we deliver projects faster, with 20–30% lifecycle cost savings and significant reductions in energy consumption and rework.

By combining deep domain expertise with technological foresight, K&A is not only accelerating project delivery, but also elevating the standards of quality, safety, and environmental performance. These advances are enabling real-time insights, smarter stakeholder collaboration, and greater adaptability in a rapidly evolving AEC landscape.

K&A's digital transformation has forged a culture of innovation, collaboration, and continuous learning. Through strategic investment in upskilling, automation, and ESG-aligned digital practices, we're enhancing project outcomes and positioning ourselves as a trusted partner to forward-thinking governments, developers, and infrastructure leaders across the Middle East and beyond.

Winning the Digital Transformation of the Year award is more than a milestone—it's a testament to our leadership in driving the AEC industry toward a smarter, more sustainable future. With a proven ability to deliver complex, high-impact projects, K&A continues to redefine what's possible in the digital built environment. ■

SALES EXCELLENCE AWARD BY SCHNEIDER ELECTRIC



Khatib & Alami (K&A) received the Sales Excellence Award at the Schneider Digital Grid Innovation Days 2025, held in Milan. This recognition celebrates our longstanding partnership with Schneider Electric, which has been a cornerstone of our digital grid transformation across the Middle East and Africa.

The award highlights the ongoing success of a powerful alliance combining Schneider

Electric's global energy management and automation expertise with K&A's in-depth regional knowledge and reliable execution. By working closely, we have delivered innovative and impactful digital grid transformation projects that modernize utility infrastructure, enhance grid resilience, and advance sustainability goals.

"This milestone reflects our shared commitment to innovation and operational excellence," said Mohamed Misbah, K&A's Director of Digital Services-Middle East and Africa. As we honor our past achievements, we're also laying the groundwork for future collaboration, proudly supporting utilities on their path to smarter, more sustainable energy systems."

The partnership will now focus on expanding into next-generation initiatives, including utility network migrations, grid analytics, smart energy platforms, and AI-powered grid operations—key elements in accelerating the global digital grid agenda.

"We thank our dedicated teams, whose collaboration has made this success possible. With a shared vision and proven track record, K&A is well-positioned to scale new heights in digital infrastructure and energy innovation." ■

KHATIB & ALAMI RENEWS BSI KITEMARK™ CERTIFICATION FOR EXCELLENCE IN BIM DELIVERY

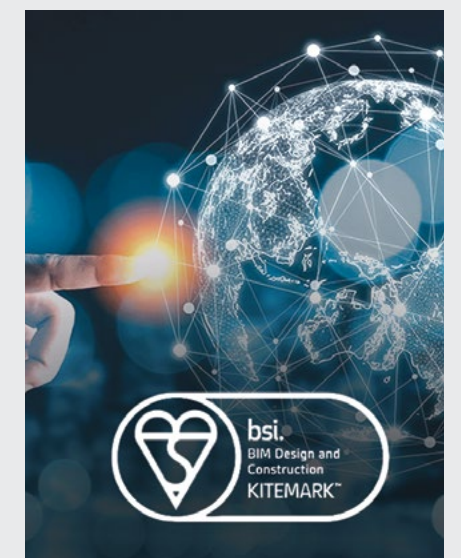
Khatib & Alami (K&A) has once again reaffirmed its leadership in digital delivery by renewing its BSI Kitemark™ Certificate (KM 700648). This certification validates our excellence in BIM delivery for design, construction, and commissioning across multiple international offices.

Originally issued in 2018 and effective through November 2027, the certificate confirms K&A's full compliance with ISO 19650-1:2018, ISO 19650-2:2018, and the security-focused requirements of ISO 19650-5:2020 by ensuring structured, collaborative, and secure

information management throughout the project lifecycle.

K&A achieved the certification following a rigorous assessment of its project delivery maturity and stakeholder collaboration practices, including criteria related to client satisfaction.

The BSI Kitemark™ Certificate covers a broad range of disciplines, including engineering, architecture, construction supervision, environmental services, quantity surveying, and geospatial system integration (GSI).



With certified offices across the UAE, Saudi Arabia, Lebanon, Egypt, and India, K&A continues to lead digital transformation across the region, championing quality, sustainability, and innovation. ■

K&A EARNs GREAT PLACE TO WORK® CERTIFICATION IN SAUDI ARABIA

Celebrating our people-powered success

We're proud to announce that Khatib & Alami (K&A) KSA has been officially certified as a Great Place To Work®, a globally recognized benchmark for workplace excellence.

This achievement reflects the heart of our culture: one founded on trust, collaboration, and an unwavering commitment to our people. It's more than recognition; it's a celebration of the environment we've built together with each and every employee.

At K&A, we believe great work starts with a great workplace. That means creating an environment for people to feel valued, heard, supported, and empowered to make a meaningful impact. This certification is a direct reflection of the everyday experience of our teams, guided by shared values and a deep sense of belonging.



WHAT THE CERTIFICATION MEANS

The Great Place to Work® certification is awarded through an independent assessment of the employee experience. Our team participated in a confidential survey that evaluated management practices, HR policies, and the overall approach to employee experience.

Additionally, we submitted a Culture Brief that showcased our people-first initiatives. Together, this feedback formed the foundation of our certification.

BUILT WITH INTENTION AND HEART

This recognition marks a multi-year journey, one shaped by employee insights and grounded in local culture and shared values. Every initiative we've launched, from wellness programs and cultural celebrations to open communication channels and recognition initiatives, has been designed to reflect what matters most to our people.

This vision was brought to life by recognizing excellence and celebrating achievements across all levels.



Great Place To Work®

To support our people beyond their work, we've introduced energy-boosting and balance-focused activities that promote mental and physical well-being. At the same time, we remain deeply rooted in our heritage, honoring Saudi culture while embracing the diversity that strengthens our teams. These efforts are complemented by meaningful moments that foster optimism and build genuine connections across the organization.

Creating a vibrant and inclusive workplace is at the heart of everything we do, ensuring everyone feels seen, valued, and empowered. To further support this, we encourage open dialogue between leadership and staff, building trust and alignment at every level. And through it all, we continue to strengthen pride in who we are—our K&A identity and shared mission.

"This is a proud milestone for all of us at K&A. It reflects the culture we've grown up with, one rooted in strong values: collaboration, integrity, accountability, and a deep belief that our people always come first. This recognition is not just about where we work, but how we work together. Thank you to every member of the K&A family for making this possible," said Maher Kahil, Vice President-Riyadh.

LOOKING AHEAD

This certification is a proud moment, but it's also a launchpad for what's next. Our commitment to people doesn't stop here. We continually evolve to ensure our teams have the support, recognition, and growth they deserve.

To future talent looking for a "great place to work," we're waiting for you. ■



INDUSTRY RANKING

DR. NAJIB KHATIB RANKED AMONG TOP 5 CONSULTANTS IN CONSTRUCTION WEEK MIDDLE EAST'S 2025 POWER 150 LIST

Khatib & Alami (K&A) Chairman and CEO, Dr. Najib Khatib, was ranked 5th in the Consultants category of Construction Week Middle East's 2025 Power 150

List. This recognition highlights his visionary leadership, which has positioned K&A at the forefront of delivering high-impact, digitally enabled, and sustainable infrastructure projects across the Middle East and Africa.

Under Dr. Khatib's leadership, the company has led impactful initiatives by integrating cutting-edge digital capabilities, developing regional talent, and forming strategic partnerships. His steadfast commitment to innovation and sustainable development continues to shape K&A's role in building resilient and inclusive communities. ■



CASE STUDY

GEOAI FOR NATIONAL WATER FORECASTING IN BAHRAIN

Artificial Intelligence and Spatial Data for Future-Ready Water Planning

EXECUTIVE SUMMARY

Khatib & Alami (K&A) partnered with the Electricity and Water Authority (EWA) of Bahrain to develop a water master plan, which spans from 2024 to 2032 and falls under the Water & Environment sector. In response to growing concerns over water security, the Kingdom of Bahrain aims to implement this comprehensive water master plan to manage its resources efficiently, anticipate future demand, guide national investment strategies, and ensure long-term infrastructure resilience.

Due to historical challenges in demand forecasting, and with Bahrain's growing population and urban development, EWA recognized the need to move beyond conventional, static forecasting methods. In response, K&A's Water & Environment sector collaborated with the Digital

Services team to introduce the GeoAI Spatial Method and forecast water demand more accurately. The goal was to implement a future-proof, intelligent system capable of adapting to policy changes, infrastructure development, and sector-specific needs. K&A was selected as the partner of choice for this ambitious project, thanks to its deep expertise in water master planning, digital innovation, and geospatial AI applications across the region.

PROJECT CHALLENGES

Bahrain's water master planning efforts faced significant challenges, particularly in demand forecasting and strategic planning. A major limitation was the absence of a high-resolution population distribution model, which led to considerable accuracy gaps. These shortcomings led

to inefficiencies and missed opportunities to optimize Bahrain's long-term water resource management.

Additionally, Bahrain's water system requires tailored, sector-specific interventions to address all key areas, including commercial, residential, and industrial. Adding to the complexity is the need to align the new system with Bahrain's national water strategy targets, such as reducing global non-revenue water and improving per capita water consumption efficiency.

K&A'S SOLUTION

K&A introduced a transformative GeoAI-based methodology for water demand forecasting. The team built a detailed 50x50-meter resolution population grid using satellite imagery, including nightlight data, and trained machine learning models to reflect actual spatial distribution across Bahrain.

This grid served as the foundation for disaggregated forecasting by sector and non-revenue water. The forecasting engine integrated historical consumption data from 2012 to 2023, infrastructure expansion plans, and national development goals.

The result was a model that continuously learns and adapts to changes in land use, planning policies, and population shifts.

IMPLEMENTATION PROCESS

The project was executed in two main phases. First, the team developed the geospatial population grid using remote sensing and AI algorithms. In the second phase, this grid was overlaid with multi-year water demand data and projected growth scenarios to develop a spatially and temporally dynamic forecasting model covering the period from 2024 to 2032.

K&A's interdisciplinary team included specialists in GIS, data science, water engineering,

and AI modeling. Tools and platforms comprised ArcGIS, Python-based AI libraries, remote sensing imagery, and a custom-built spatial dashboard for client interaction.

The team collaborated closely with EWA to validate the data and align the model with relevant policy frameworks. Regular review sessions ensured technical accuracy and stakeholder alignment throughout the development process.

"OUR GOAL IS TO DELIVER A COMPREHENSIVE MASTER PLAN FOR THE KINGDOM OF BAHRAIN THAT SETS A REGIONAL BENCHMARK FOR EXCELLENCE IN WATER PLANNING."

Ahmad Habanjar, Design Manager - Water & Environment

RESULTS & IMPACT

The GeoAI-driven forecasting model delivered tangible benefits to Bahrain's national water planning efforts, supporting strategic infrastructure development and sustainability targets:



Forecasted water demand is projected to increase by 15% by 2032, revealing a huge overestimation in previous master planning methodologies.



High-end investment zones, were identified enabling proactive and targeted infrastructure planning.



Areas with declining or stagnant demand, were also identified, mainly due to residential lands saturation and the implementation of NRW reduction strategies.



Grid-level resolution allowed planners to visualize demand changes block by block, significantly enhancing planning precision.



The model is aligned with national KPIs, including targets for reducing NRW and improving water use efficiency.



Automated updates and a reduced reliance on manual field surveys contributed to cost savings and enhanced future scalability.



The model also highlights areas where water demand may be affected by delays in planned commercial and industrial projects, supporting conditional and adaptive planning decisions.

LESSONS LEARNED

The Bahrain GeoAI project demonstrated the immense value of integrating artificial intelligence and geospatial analysis into national utility planning. By replacing outdated models with a live, learning system, EWA has taken a major step toward achieving long-term water security.

The success of this initiative sets a precedent for regional governments seeking to modernize infrastructure planning through digital transformation. K&A continues to support clients across the GCC and beyond with next-generation tools that strike a balance between technical rigor and real-world adaptability.

To learn more about how K&A uses AI, spatial analytics, and water engineering to develop smarter infrastructure, visit <https://www.khatibalami.com/Divisions/GSI.html> or contact our team for a customized consultation. You can also find related whitepapers and case studies on our website. ■

"THIS WATER DEMAND FORECAST STUDY IS A MILESTONE ACHIEVEMENT AND COULD SERVE AS A REFERENCE MODEL FOR SIMILAR INITIATIVES ACROSS THE REGION."

EWA representative



MARKET FOCUS | EGYPT

ENGINEERING THE FUTURE: K&A'S IMPACT ON SUSTAINABLE INFRASTRUCTURE AND DIGITAL TRANSFORMATION

Egypt continues to stand as one of Khatib & Alami's (K&A) most strategic and fast-growing markets, where the convergence of infrastructure development, digital transformation, and national vision is creating unprecedented opportunities for impact. For over two decades, K&A has been at the heart of this evolution, helping shape Egypt's modern landscape through its design excellence, multidisciplinary teams, and long-standing client partnerships.

Established in Cairo in 1999, K&A Egypt has grown into the largest design hub globally. With more than 1,000 professionals operating across two major locations in Mohandessin and Nasr City, our team has played a vital role in delivering some of K&A's most complex and high-profile projects. These efforts span urban planning, infrastructure and utilities, transportation, and real estate, supporting Egypt's national development objectives.

A DIGITAL-FIRST APPROACH TO NATIONAL PRIORITIES

At the core of our work is a commitment to innovation. We have embedded advanced digital solutions into every stage of project delivery. The Cairo-based Digital Services Development Center now represents 30% of K&A's global digital capacity, supporting projects across the region.

Technologies such as Building Information Modeling (BIM), Geographic Information Systems (GIS), AI, Digital Twins, and Internet of Things (IoT) tools have been fully integrated into our workflows.

From digital dashboards and energy simulations to cloud-based collaboration platforms, this digital-first approach enhances project accuracy, streamlines communication, and improves decision-making across all disciplines.

K&A's transformative strategy isn't just internal. By working closely with utilities, ministries, and private developers, we have helped bring digital innovation to life on some of Egypt's most ambitious initiatives—making cities smarter, grids more resilient, and infrastructure more sustainable.

LEADING PROJECTS WITH LASTING IMPACT

Among K&A's most defining contributions in Egypt is its involvement in the Light Rail Transit (LRT) system, a fully electric, 110-kilometer transit network connecting Cairo to the New Administrative Capital

and the 10th of Ramadan City. The system now serves over 500,000 passengers daily and is expected to reach more than nine million people by 2030. The LRT's integration with Cairo Metro and Bus Rapid Transit is already easing congestion and reducing commute times across eastern Cairo.

Another landmark is the New Delta Wastewater Treatment Plant, which has earned four Guinness World Records and has become the

largest agricultural drainage treatment facility in the world. With a capacity of 7.5 million cubic meters per day, it plays a vital role in reclaiming arid land, reducing pollution, and supporting national food security goals.

K&A is also leading digital modernization efforts for the Egyptian Electricity Holding Company, delivering an advanced distribution management and GIS system for four major districts. ▀



Light Rail Transit (LRT)

The project aligns with Egypt's objectives to digitize and optimize its electrical distribution grid. Our team developed real-time monitoring tools, data modeling, and network management solutions built in partnership with Schneider Electric.

The Safaga Port redevelopment, a \$200 million investment designed to transform regional trade and port logistics, is another example of how K&A is shaping infrastructure with a long-term vision. From LEED-certified buildings to modular construction and energy-efficient systems, the port exemplifies our ability to align engineering with sustainability at scale.



New Delta Wastewater Treatment Plant



The Safaga Port

DEVELOPING TALENT AND SUPPORTING NATIONAL GROWTH

K&A has grown in Egypt not just by delivering projects, but by empowering people. Through continuous training, mentorship, and digital upskilling programs, we have cultivated a strong learning culture, equipping teams with expertise in cutting-edge technologies. Engineers in Cairo are now leading BIM-based design audits, parametric modeling, and AI-integrated simulations.

Partnerships with institutions like the Egyptian National Institute for Transport (ENIT) are further enabling local capacity-building. In 2024, K&A participated in a comprehensive training program on metro rail systems, supporting the next generation of engineers with hands-on learning in risk management, quality control and assurance, and the design basis of steel structures.

RECOGNITION AT THE BIG 5 EGYPT IMPACT AWARDS

Our work in Egypt was recognized with the prestigious Engineering Consultancy Firm of the Year award at the Big 5 Egypt Impact Awards. This accolade reflects K&A's unwavering dedication to design excellence, digital innovation, and collaborative client partnerships. It also celebrates the contributions of our Egypt-based team, whose leadership, talent, and resilience have helped advance some of the country's most transformational projects.



CFC Hotels Development

**2030
VISION OF EGYPT**

FUTURE OUTLOOK

As Egypt continues its journey toward a digitally integrated, environmentally sustainable future, K&A remains a committed partner in progress. We are currently supporting strategic clients, including Emaar Misr, Al-Futtain Real Estate Development, the Suez Canal Economic Zone, Abu Dhabi Ports Group (AD Ports), and the European Bank for Reconstruction and Development on high-impact developments in transportation, logistics, housing, and utilities.

With its multidisciplinary capabilities, digital expertise, and deep local presence, K&A is proud to be part of Egypt's transformation. The foundation is strong, and the outlook for 2025 and beyond is one of innovation, resilience, and growth—delivered together, with purpose. ■



DIGITAL INFRASTRUCTURE | KSA

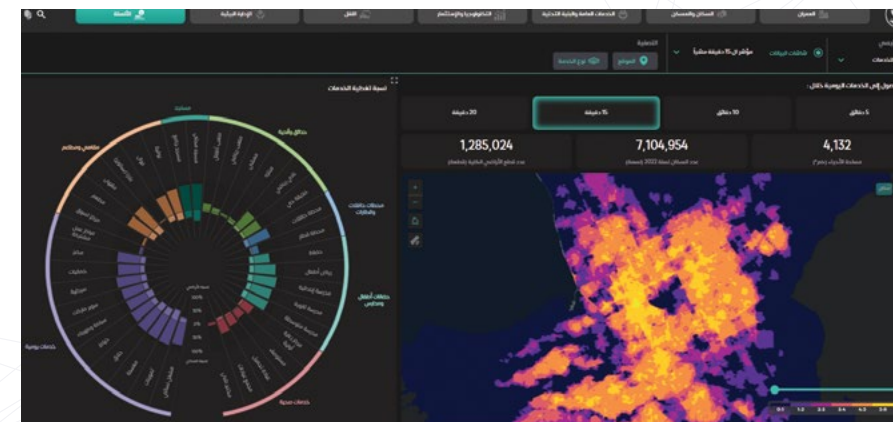
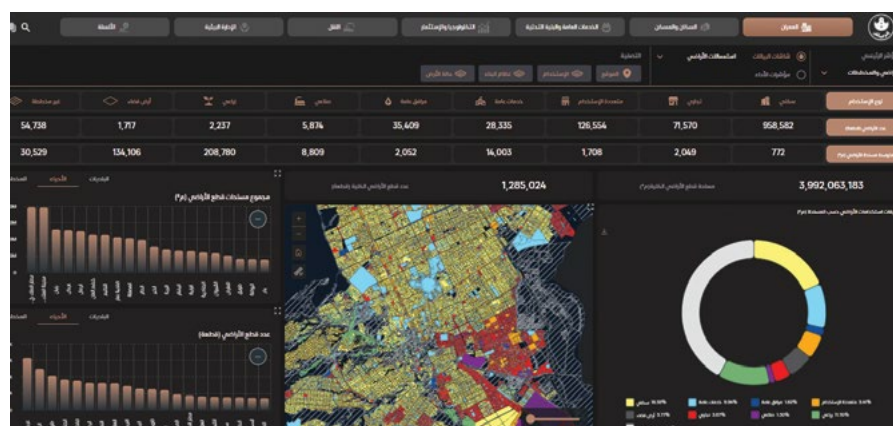
RIYADH URBAN DATA CENTER: LAYING THE DIGITAL FOUNDATION FOR COGNITIVE URBANISM

Riyadh is actively evolving into a cognitive city, harnessing smart technologies and data-driven approaches to enhance the quality of life and improve urban management. One remarkable example of this shift is the recently completed Urban Data Center (UDC), developed by Khatib & Alami (K&A) for Riyadh Municipality. Cities of the future aren't just smart—they're cognitive. They understand their own dynamics, learn from patterns, and respond intelligently to people's needs. At the heart of this transformation is data: dynamic, multi-layered, and constantly evolving. Riyadh is leading this movement through the UDC, a major milestone in its journey to becoming a global leader in urban intelligence.

At the core of this initiative lies a sophisticated, integrated spatial database that is continuously updated to

ensure accuracy and relevance. This living database forms the foundation of the UDC, equipping decision-makers with reliable data, in-depth analytics, and actionable insights grounded in rigorous scientific methodologies. Such capabilities are essential for effective urban planning, comprehensive statistical assessments, and real-time monitoring of the city's complex dynamics.

Mohammed Sharara, Director, Business Development, Digital Services-KSA, captures the essence of this breakthrough: "The Urban Data Center marks a transformative milestone in Riyadh's smart city vision. By embedding intelligence into every layer of urban management, the center empowers leaders to shape a more resilient, efficient, and livable city. It's not just about data—it's about making cities smarter through insight and innovation."



The UDC serves as a digital backbone for Riyadh's cognitive urban ecosystem, enabling the city to embrace smart governance at scale. Supported by integrated predictive analytics and AI-driven decision support, the center provides a robust digital infrastructure that allows Riyadh to evolve into a future-ready, resilient, and thriving urban landscape.

"BY EMBEDDING INTELLIGENCE INTO EVERY LAYER OF URBAN MANAGEMENT, THE CENTER EMPOWERS LEADERS TO SHAPE A MORE RESILIENT, EFFICIENT, AND LIVABLE CITY."

*Mohammed Sharara,
Director, Business
Development, Digital
Services-KSA*

Through the UDC, urban planners can identify challenges, monitor performance, and track city plans with unprecedented precision. The center hosts a centralized and adaptive spatial database encompassing diverse urban datasets across multiple layers.

Inspired by global best practices, the UDC enables in-depth studies of Riyadh's urban development trends and generates tailored reports to inform government departments and agencies. Additionally, it features specialized applications and real-time dashboards to monitor key urban indicators while actively enhancing the technical capacity of Riyadh Municipality staff in urban planning and geospatial technologies.

The project's significant contributions to geospatial innovation earned international acclaim at the 2025 Geospatial World Excellence Awards, where Riyadh Municipality was honored with the Excellence in Smart City & Urban Planning Award—a testament to its pioneering role in leveraging data and technology to drive sustainable urban development.

Looking ahead, the Urban Data Center is more than a technological achievement—it is a blueprint for the future. In this vision, cities become proactive partners in sustainability and well-being, evolving in step with the needs of their citizens. As more urban centers adopt cognitive frameworks like Riyadh's, data-driven systems will enable cities to become smarter, more adaptive, and human-centered.

"What we've built in Riyadh isn't just an advanced system—it's a foundation for a new era of city-making. One that listens, learns, and leads with intelligence," concluded Mohammed Sharara. ■



RESIDENTIAL | UAE

RIVA RESIDENCE TOWER ELEVATING WATERFRONT LIVING IN DUBAI

Developed by Vakson Real Estate LLC and designed by Khatib & Alami (K&A), Riva Residence Tower is redefining waterfront luxury living along Dubai's rapidly evolving coastline. Situated in Dubai Maritime City, the tiered residential tower combines visionary architecture with resilient engineering, echoing the city's ambition to integrate lifestyle and structural artistry.

Positioned between Port Rashid and Dubai Dry Docks, the tower's stepped form creates layered living spaces and expansive terraces that offer residents uninterrupted views of the Arabian Gulf. The façade, an open glass envelope born from a bold redesign during construction, symbolizes the project's evolving ambition—open, fluid, and strikingly modern.

Beneath this visual elegance lies a foundation of complex engineering. Built on reclaimed land with a high water table, the site demanded exceptional solutions. K&A implemented deep piles anchored to sea rock and advanced ground stabilization techniques to ensure long-term structural integrity. These challenges became opportunities for innovation, pushing the boundaries of marine-edge construction.

“Riva Residence is more than architecture—it’s an experience,” says Naveed Ghouse, Project Manager—Buildings at K&A. “We envisioned a living space that speaks to Dubai’s spirit: bold, visionary, and deeply rooted in place.”



Technology also played a central role in the project's success. The team leveraged Building Information Modeling (BIM) from concept through construction, which helped reduce timelines by up to 30% and optimized material usage by 20%.



Riva Residence Tower was designed to meet LEED Silver certification, aligning with Dubai's commitment to sustainability. The building incorporates energy-efficient systems, water-saving technologies, and regional construction materials. Native landscaping minimizes irrigation needs while enhancing the overall aesthetic.

As demand for waterfront living continues to rise in Dubai, Riva Residence stands as a forward-looking model—one that embraces environmental context, architectural innovation, and human-centered design. It sets a new standard for high-performance, luxury coastal living in the UAE. ■



“RIVA RESIDENCE IS MORE THAN ARCHITECTURE—IT’S AN EXPERIENCE. WE ENVISIONED A LIVING SPACE THAT SPEAKS TO DUBAI’S SPIRIT: BOLD, VISIONARY, AND DEEPLY ROOTED IN PLACE.”
Naveed Ghouse, Project Manager – Buildings at K&A



INTERVIEW | NIK ROWLEY

BEYOND COMPLIANCE: A CONVERSATION WITH NIK ROWLEY ON THE FUTURE OF HSE

Nik Rowley, Director – Quality & HSE at K&A, shares the defining moment that shaped his approach to safety, discusses common myths about HSE, and highlights how emerging trends and technologies are driving safer, healthier workplaces and cities worldwide.

Q: What's one moment in your career — unexpected or eye-opening — that completely changed how you think about safety and wellbeing at work?

A: Early in my career, I worked with the engineering team at Unilever in Leeds, UK — my hometown. The site is one of the largest aerosol manufacturing plants in the world, producing brands like Axe and Rexona, and it's located right in the heart of a busy residential area. Just 100 meters from people's homes, there were hundreds of tonnes

of LPG and ethanol stored in tank farms. Because of this, the site was classified as an upper-tier facility under the UK's Control of Major Accident Hazards (COMAH) regulations. It was a real eye-opener. I quickly learned that safety isn't just a department's job — it's a way of thinking. When you're working with flammable gases and high-risk equipment, there's no room for complacency. Everything had to be planned and executed with precision. That experience shaped my whole approach to HSE. It taught me that safety isn't just about following rules — it's about mindset, responsibility, and always staying a few steps ahead of the risk. But more importantly, it showed me that even in the most complex and high-risk environments, if you assess, plan, and control properly, you can do it safely.

Q: What are some of the most common misconceptions you encounter about HSE in large-scale organizations or projects?

A: Probably the biggest one is thinking HSE is "someone else's job." It's not. Safety needs to be owned by everyone, from senior leadership to the people doing the work. Another misconception is that if you're following the rules, you must be safe. However, ticking boxes doesn't mean you're managing risk well. Especially in large infrastructure projects, you need to be proactive, not just reactive. That means building safety into the planning, not just trying to manage it once work starts.

Q: From a global perspective, what emerging trends are shaping the future of HSE, especially in urban and infrastructure development?

A: There's a huge shift happening. Cities are getting smarter, and safety is now part of the design conversation,

not just an afterthought. There's more attention on wellbeing too—extending beyond physical safety to include mental health and psychological safety. In the Middle East, where we're working on major infrastructure tied to national visions, HSE is increasingly seen as a key to long-term success. It's no longer about compliance; it's about building trust and resilience into how we work.

Q: Are there any innovative technologies or digital tools you believe will transform HSE practices over the next decade?

A: Definitely. AI and predictive analytics are already helping us anticipate risks before incidents happen, including patterns in near-misses or fatigue indicators. Drones are great for inspections, especially in hard-to-reach or dangerous areas. But combining BIM with safety planning is a big step forward — it helps us visualize risks and plan safer construction before we even break ground. But one of the biggest opportunities is connecting all this data into simple, usable dashboards so decision-makers can actually act on it.

Q: Can you share an inspiring example of HSE excellence from a global city or project that you believe others can learn from?

A: Singapore really stands out. They've made safety a national priority — not just in regulations but in culture. Their Vision Zero approach makes it clear that every accident is preventable. They've invested in training, enforcement, and tech in a way that creates a safety mindset across industries. It's a great example of how you can take safety beyond compliance and make it a driver of innovation and trust. ■

REHABILITATION | LEBANON

BEIRUT AIRPORT ROAD REHABILITATION PROJECT OFFICIALLY BEGINS

The rehabilitation of Beirut's primary airport access road is underway, aiming to upgrade critical infrastructure, improve traffic flow, and enhance safety along one of Lebanon's most vital corridors to Rafic Hariri International Airport.



The Beirut Airport Road Rehabilitation Project has officially launched, marking a significant step toward modernizing one of Lebanon's most important transportation links. The 8-kilometer stretch connecting the airport with central Beirut serves as a main artery for commuters, travelers, and logistics operations.

Multidisciplinary consultancy Khatib & Alami (K&A) is leading the project in close coordination with the Ministry of Public Works and Transport. Representatives from government agencies, planning authorities, and the private sector gathered to highlight the project's strategic role in enhancing national mobility infrastructure.

"WE ARE NOT JUST FIXING A SURFACE ISSUE—WE ARE UPGRADING A NATIONAL ASSET."
Ramadan Harb, K&A Senior Vice President.

Years of repeated utility installations—including water, electricity, and telecom lines—have deteriorated the road's surface, leading to uneven pavement, traffic delays, and safety concerns. The rehabilitation includes road resurfacing, marking and signing, upgraded drainage systems, enhanced lighting, new pedestrian sidewalks,

"OUR GOAL IS TO MEET INTERNATIONAL STANDARDS AND DELIVER A SAFER, MORE DURABLE, AND EFFICIENT ROUTE THAT BENEFITS ALL USERS."

Ramadan Harb, K&A Senior Vice President.



safety improvements, and refurbishment of tunnels—including lighting and ventilation systems.

"We are not just fixing a surface issue—we are upgrading a national asset," said Ramadan Harb, K&A Senior Vice President. "Our goal is to meet international standards and deliver a safer, more durable, and efficient route that benefits all users."

He noted that traffic congestion is one of the core challenges being addressed. "This rehabilitation is expected to reduce delays, especially during peak hours. It will also improve access to and from the airport, crucial for both economic activity and daily mobility."

The first phase of the project focuses on the stretch between the airport terminal and Ouzai branch Road, with subsequent phases targeting deteriorated sections, tunnel systems, and pedestrian infrastructure. In addition to mobility improvements, the project includes landscaping and the restoration of safety features such as guardrail and barriers.



"This is one of the most frequently used roads in Lebanon, and it must reflect the standards expected of national infrastructure," Ramadan Harb added.

With construction now underway, the Beirut Airport Road Rehabilitation Project is expected to ease congestion, improve road safety, and support Beirut's long-term urban mobility objectives. ■

BEYOND 50 YEARS IN OMAN: PIONEERING GIS AND DRIVING NATIONAL DEVELOPMENT

Since beginning its journey in Oman in 1972 and opening its first office in Muscat in 1974, Khatib & Alami (K&A) has played a central role in shaping the Sultanate's development. For over five decades, K&A has delivered transformational projects across infrastructure, urban planning, and architecture, all while forging strong partnerships that have fueled national progress.

A defining chapter in that journey began in 1988, when K&A introduced Geographic Information Systems (GIS) to Oman—establishing the country as the foundation of a geospatial legacy that now spans the Middle East and Africa. This pioneering step revolutionized mapping and spatial data applications across sectors, laying the groundwork for smarter, data-driven decision-making. ■

**“WE LOOK
FORWARD TO
TRANSFORMATIVE
PROJECTS THAT
WILL BENEFIT OMAN
FOR GENERATIONS
TO COME.”**

*Mostafa Sayed, Director of
K&A Oman.*



Urban Landbank Using Aerial Survey and Artificial Intelligence
Dhofar Governorate, Oman



“Khatib & Alami is honored to have partnered with Esri in shaping Oman’s future through the power of GIS,” said Faisal Alami, Partner and Executive Vice President. “For over three decades, we have empowered decision-makers with data-driven solutions to tackle challenges in transportation, urban planning, and sustainability.”

In 1990, K&A became Esri’s exclusive distributor in Oman, solidifying a partnership that helped institutionalize GIS across the public and private

sectors. The establishment of Esri Muscat in 2007 and a strategic alliance with Qurum Business Group (QBG) in 2013 further expanded the country’s GIS ecosystem, enabling over 100 organizations to implement geospatial strategies supporting urban development and national planning.

Esri Founder and President Jack Dangermond reflected on Oman’s early leadership in GIS, stating: “Oman became a shining light in the explosion of GIS universally. I join others

in celebrating the way K&A brought this into being... Oman has played a key role in shaping the understanding of GIS’s potential and how systematic design can bring about change.”

A LEGACY OF INNOVATION, ROOTED IN OMAN

As Oman advances toward the ambitious goals of Vision 2040, K&A continues to play a leading role in driving smart, sustainable development. With nearly 7,000 professionals worldwide, and half of its Oman workforce being local talent, the company’s strategy is built on a deep commitment to digital innovation, national capacity building, and long-term resilience.

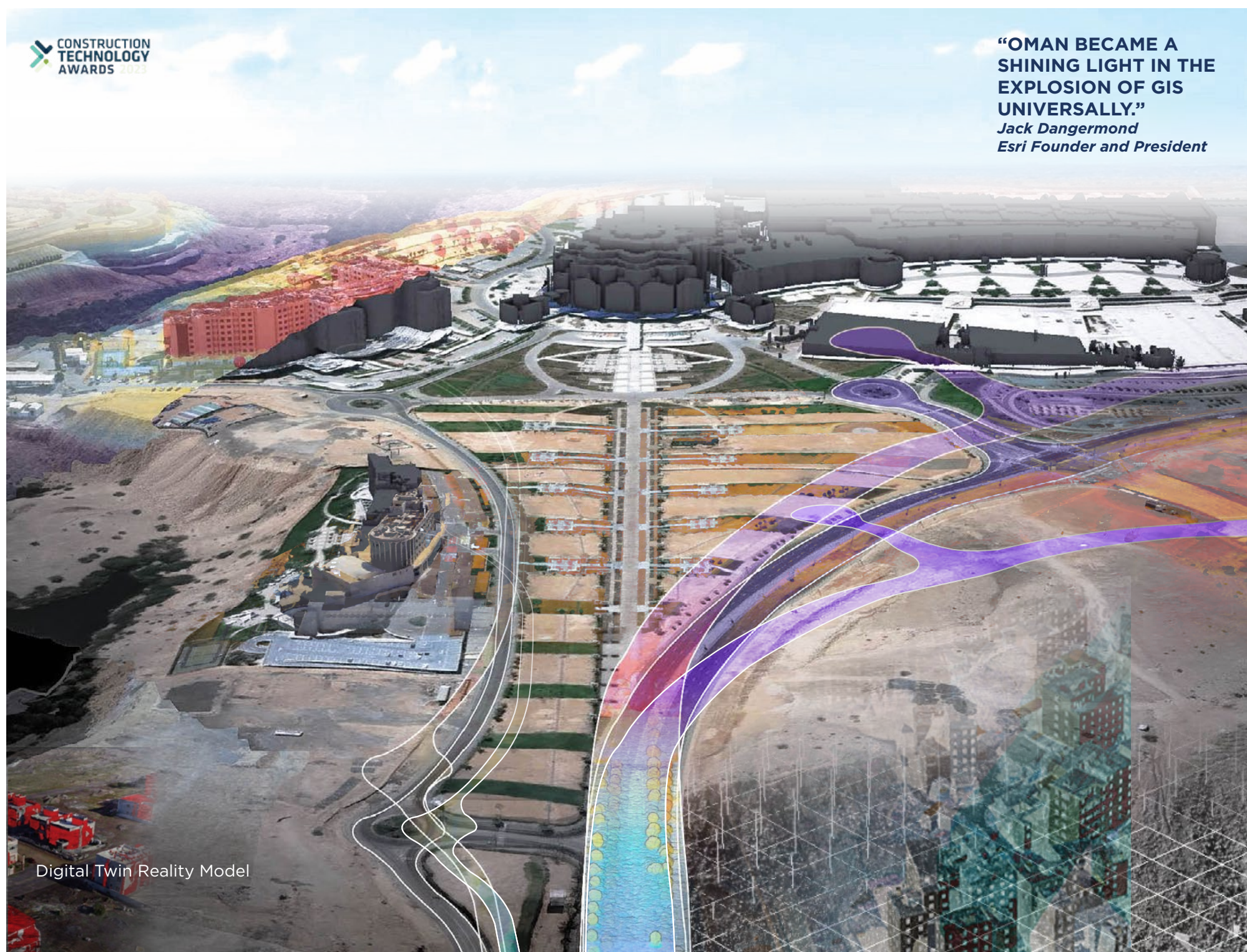
“Our work is deeply aligned with Oman Vision 2040,” said Mostafa Sayed, Director of K&A Oman. “Every project we deliver supports the nation’s sustainable and digital ambitions. The global expertise and innovative approaches of our team fuel the success of every endeavor.”

From introducing GIS in 1988 to becoming a regional leader in geospatial transformation, K&A’s journey in Oman reflects a legacy of vision, resilience, and innovation. As it exceeds 50 years of presence in the Sultanate, the company continues to evolve by embracing advanced technologies and sustainable practices to build smarter, more connected communities.

“Celebrating over 50 years in Oman is not just about reflecting on our past—it’s about our commitment to the future,” said Mostafa Sayed. “We look forward to transformative projects that will benefit Oman for generations to come.” ■

“FOR OVER THREE DECADES, WE HAVE EMPOWERED DECISION-MAKERS WITH DATA-DRIVEN SOLUTIONS TO TACKLE CHALLENGES IN TRANSPORTATION, URBAN PLANNING, AND SUSTAINABILITY.”

Faisal Alami, Partner and Executive Vice President.



“OMAN BECAME A SHINING LIGHT IN THE EXPLOSION OF GIS UNIVERSALLY.”

*Jack Dangermond
Esri Founder and President*

Digital Twin Reality Model

OMANTEL PARTNERS WITH KHATIB & ALAMI TO ADVANCE GIS NETWORK PLANNING



Omantel, the leading integrated telecommunications provider in the Sultanate of Oman, has appointed Khatib & Alami (K&A) to deploy a new GIS Network Planning System—a significant milestone in its digital transformation journey.

The strategic partnership was initiated during a joint alignment meeting, where stakeholders from both organizations came together to define shared goals, expectations, and next steps. K&A will lead the implementation, bringing a highly specialized team with deep expertise in telecommunications and geospatial technologies.

This ambitious project aims to enhance Omantel's Geographic Information System (GIS) network planning capabilities through a more intelligent, sustainable, and consistent approach to network design. It reflects Omantel's broader strategy to harness spatial intelligence in support of more agile, future-ready operations.

"This project reflects K&A's growing expertise in digital solutions tailored for the telecom sector, and our ability to partner with leading organizations to achieve long-term strategic objectives," said Mouhamad Mounzer, Senior Account Manager at K&A. "As the project moves forward, we remain fully committed to delivering a robust, future-ready solution through close collaboration, technical excellence, and a shared vision for innovation."



With the deployment of this advanced GIS system, Omantel will benefit from a unified design interface, enhanced system integration, and

streamlined data flows across its operational platforms. These improvements will drive workflow optimization, improve planning efficiency, and reinforce Omantel's leadership in delivering innovative telecommunications services throughout the Sultanate.

This partnership reaffirms K&A's commitment to supporting digital transformation across the region and delivering impactful geospatial solutions that enable smarter, more connected communities. ■

EMPOWERING THE NEXT GENERATION



K&A's role in Oman extends beyond project delivery—it includes shaping the future of the local geospatial community. A recent knowledge-sharing session at Sultan Qaboos University demonstrated the company's commitment to youth engagement and talent development.

During the session, GIS students explored how spatial technologies support real-world solutions across utilities, mobility, and national infrastructure.

"The students' curiosity and eagerness to understand how GIS can solve real-world problems was truly inspiring," said Mouhamad Mounzer. "These conversations are essential for building a stronger future." ■

REIMAGINING TOURISM: SMART DESTINATIONS AND THE FUTURE OF URBAN TRAVEL



Houssam Masri, Ph.D., Smart City Design Lead at Khatib & Alami (K&A), draws on his deep expertise in urban innovation to explore how technology can transform tourism into a driver of long-term value for cities and communities across the Middle East.

The conversation around tourism is no longer confined to marketing campaigns, hotel capacity, or visitor numbers. Increasingly, the world's most forward-thinking destinations are asking a new set of questions: How can we use technology to enhance the travel experience? How can we manage growth sustainably? How do we make tourism

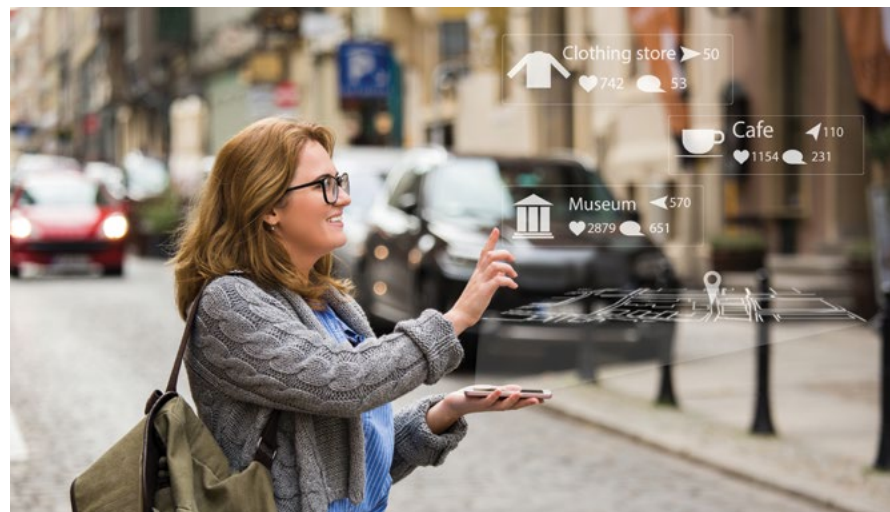
work for everyone—residents, visitors, and future generations alike?

The answers lie in what we now refer to as Smart Destinations. From the Gulf to the Mediterranean and beyond, governments and urban developers are recognizing the enormous potential of tourism as a catalyst for digital and sustainable transformation. We are seeing efforts to embed smart infrastructure not only in airports and hotels but also into the very fabric of cities. Whether it's real-time mobility applications in Dubai, AI-powered urban services in Riyadh, or digital twin platforms in Doha, the shift is already underway, redefining what it means to travel.

Smart Destinations are not simply about convenience or digital touchpoints; at their best, they represent a more connected, inclusive, and intelligent approach to placemaking.

They rely on interoperable systems and real-time data to enable seamless mobility, tailored experiences, and responsive planning. They also create space for communities to benefit, spotlighting local entrepreneurs, preserving cultural identity, and using technologies like AR and VR to bring history to life.

The Middle East, where urban growth and cultural heritage coexist, presents unique opportunities to lead in smart city innovation. Many cities ■

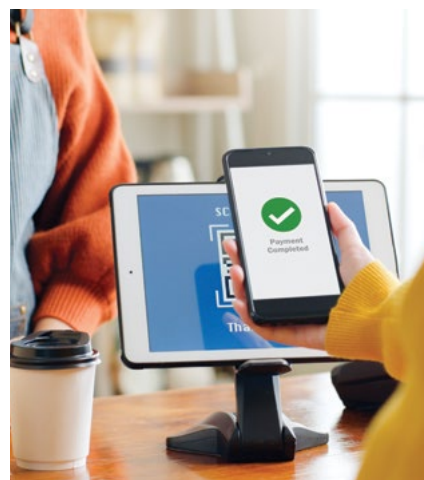


When thoughtfully applied, these innovations can turn cultural tourism into a dynamic driver of sustainability, engagement, and inclusive urban development.

To translate vision into action, cities must lay the right foundations and this begins with connected infrastructure, both physical and digital. Integrated transport systems, IoT-enabled public spaces, sensor-driven crowd management, and digital twins form the backbone of a Smart Destination. These technologies enable cities to enhance seamless mobility, optimize visitor flows, and make data-informed decisions in real-time, thereby improving the quality of life for residents while enriching the tourist experience.

But technology must do more than streamline movement; it should deepen the connection. When used thoughtfully, tools like AR and VR storytelling, geolocated content, and digital placemaking can reveal hidden narratives, revive heritage, and offer immersive experiences tailored to different audiences, from history seekers to digital natives.

No less important is how these destinations are financed and governed.



■ in this region are already pioneering smart urbanism through ambitious tech-driven initiatives. For example, Dubai's integrated transport apps, such as RTA Dubai and RTA Smart Drive, offer all-in-one platforms for public mobility, parking, tolls, and metro services. RTA Smart Drive alone has reached millions of downloads.

In Riyadh, AI-enabled urban services, including smart bins, drone surveillance, and predictive platforms for visual pollution control, contribute to its ranking among the world's top smart cities.

Meanwhile, Doha is advancing digital twin technology through the TASMU Smart Qatar program, creating real-time models of city infrastructure piloted in public transport and airport operations. The next step is to integrate tourism into the smart cities agenda, not as an afterthought, but as an impetus for long-term economic and social value.

Across the Middle East, cultural heritage sites offer untapped potential to merge storytelling with technology in ways that elevate visitor experiences while preserving identity. In Jeddah's Al-Balad district, a UNESCO World Heritage site, immersive AR walking tours could reveal layers of history through spatial narratives woven into the urban fabric.

Muscat's historic center, reimagined with geolocated displays, could take visitors on an immersive journey into its rich maritime legacy, with interactive digital guides narrating the city's seafaring past.

Beirut's cultural landmarks, equipped with crowd-sensing technology, help protect fragile sites while improving access and visitor flow.



Dr. Houssam Al Masri
Smart City Design Lead

Smart tourism cannot be exclusive or extractive. Innovative funding models, like Public-Private Partnerships (PPPs), ESG-aligned tourism bonds, and community-driven crowdfunding, are helping cities unlock capital in creative ways. But inclusive development also demands strong governance: policies that uphold data privacy, uphold data ethics, empower local entrepreneurs, and ensure the benefits of tourism reach beyond the tourism sector itself.

These cities already have the foundational tools. What's needed now is intentional integration, connecting infrastructure with narrative, access with preservation, and innovation with inclusion. This includes smart investment models: venture capital for travel-tech, ESG funds for sustainable mobility, and community crowdfunding for cultural micro-projects. Together, they help distribute risk while unlocking innovation at scale.

Still, as with any transformation, thoughtful design is crucial. Smart destinations must be human-centered. They should address the digital divide,

ensure data privacy, and strike a balance between technological efficiency and cultural authenticity. This means engaging communities rather than installing systems, and measuring success not by visitor numbers, but local impact.

Tourism is no longer a standalone sector—it's becoming a lever for urban transformation. Cities that integrate smart infrastructure, immersive cultural storytelling, and inclusive economic models into their tourism strategies will be the ones that thrive in tomorrow's global landscape.

For policymakers, this means treating tourism as a core pillar for city making—not a silo. For developers and technology partners, it means building with empathy, accountability, and long-term vision. And for those of us sharing these systems today, it means designing destinations that not only attract visitors but also serve people.

After all, the future of travel is smart, and the future of cities even smarter. ■

Houssam Masri, Ph.D., is a seasoned smart city design expert with over 30 years of experience. He specializes in broadband communication networks and smart city infrastructure projects worldwide. He led the master planning of Jeddah Central Development in Saudi Arabia and was Senior Project Manager for Smart City Design at Khatib & Alami. His expertise includes Smart Cities, Smart Buildings, Smart Homes, Fiber-to-the-Home, and Broadband Access in the MENA region. Housam holds a Ph.D. in Computer Engineering from MIT and is an active voice in the smart city community. He chairs the Smart City Operations and Applications Committee at the Fiber Connect Council MENA and participates in the ISO Smart City Technical Committee. He's also involved with the Esri GIS community, IEEE IT Society, and the Green Buildings Association.

FOR PEOPLE AND PLANET: HOW K&A IS DELIVERING ON ESG

At Khatib & Alami (K&A), we believe that every project is an opportunity to improve lives, protect vital resources, and foster more equitable and resilient communities. It is foundational to how we work, innovate, and grow. From sustainable solutions to smart governance and community empowerment, our recent initiatives reflect how Environmental, Social, and Governance (ESG) is a living practice that shapes the way we design for the future.

BUILDING SMARTER, GREENER SOLUTIONS

As climate challenges intensify, K&A is leveraging its deep technical expertise to support clients and governments in shaping more sustainable built environments. Our people are at the heart of this transformation, accelerating change through smart city strategies, energy-efficient infrastructure, and integrated geospatial technologies.

One of the most significant examples is our collaboration with the National Housing Company (NHC) across multiple large-scale developments in Saudi Arabia. Spanning Riyadh, Jeddah, and Madinah, these projects reflect the ambition of Vision 2030 to foster inclusive communities and meet the Kingdom's housing needs. K&A's role spans the entire project lifecycle, including urban planning, transportation, wet and dry utilities, and landscaping, across a built-up area exceeding 20 million m².

Spread across five urban centers—Abyar Ali, Naseem Altaif, Obhur, Qiran-Nirjis, and Dahiyat El Ghoroub—each location presents distinct topographical and socio-economic contexts, requiring tailored solutions that prioritize energy efficiency, water conservation, and the integration of walkable green

spaces. By allocating areas for residential, social, and recreational functions, the master plans aim to elevate the living experience and promote long-term well-being.

Furthermore, all residential parcels and buildings will be constructed by local beneficiaries and developers; this inclusive delivery model supports national efforts to strengthen local economies while shaping community-oriented urban environments. Through such transformative work, K&A continues to reimagine cities not just as places to live, but as ecosystems that contribute to environmental sustainability and community well-being.

EMPOWERING PEOPLE, STRENGTHENING COMMUNITIES

Social impact begins with building environments where individuals thrive, teams connect, and communities flourish. From energizing marathons in Riyadh and Beirut to setting a vibrant cheering hub at the event, our teams brought people together through movement, support, and a unified spirit. We have also partnered with the Red Cross to launch a yearly blood drive, giving back to the community in meaningful ways.



Beyond internal culture, K&A continues to invest in the next generation of changemakers. From high school internships in Qatar to university career fairs at the American University of Beirut, Saint Mary Orthodox College in Lebanon, and Abu Dhabi University in the UAE, our teams are inspiring youth and future talents to shape



the built environment through sustainable innovation and purpose.

Empowering partners and clients with tools and knowledge to improve operational efficiency remains a core focus for K&A. We support our clients by building local capacity and empowering their teams through tailored knowledge-transfer programs. From PMO awareness seminars

to hands-on GIS training workshops, we ensure the client team gains the skills needed to manage the full project lifecycle.

We are helping drive the global conversation on innovation, infrastructure, and climate resilience through our ongoing contributions to conferences and exhibitions such as Engineering the

Future with AI (EFAI 2025), Schneider Electric’s Digital Grid Innovation Days in Milan, or as thought leaders at ASCE seminars and Mobility Live Middle East.



ELEVATING EXCELLENCE THROUGH LEADERSHIP

Strong governance is the foundation of everything we do. Transparency, accountability, and innovation form the core of our operations, ensuring alignment between our strategic goals and operational execution. A prime example of pioneering practices is the integration of advanced automation tools that embed regulatory standards directly into design workflows. These tools support compliance with international safety, healthcare, and sustainability regulations while reducing manual errors and saving thousands of man-hours.



Our commitment to excellence is underpinned by internationally recognized certifications, including ISO 9001:2015 for Quality Management, ISO 27001:2022 for Information Security, and BSI Kitemark for BIM delivery following ISO 19650-1 and 19650-2 certifications, and the security-minded requirements of ISO 19650-5:2020. K&A has also achieved the prestigious CMMI Level 3 for Development and Data, a distinction held by only a handful of organizations worldwide.

Furthermore, K&A’s innovation register formalizes the way we capture, evaluate, and implement new ideas, ensuring our ESG priorities continue to evolve. At the same time, our “One K&A” framework, supported by integrated platforms like SAP ERP, CRM, and Pricing and Resource Planning Tool (PART), aligns strategy with execution by providing leadership with real-time dashboards, performance tracking, and decision-making tools.

Early stakeholder engagement is another hallmark of our governance model. By involving clients and partners at the design phase, we foster transparency, consensus, and shared accountability. This collaborative mindset helps ensure that our projects not only meet technical requirements but also support sustainable, community-focused outcomes.

A LIVING COMMITMENT

Delivering on ESG is not a one-time achievement. It’s an evolving journey that requires continuous effort, innovation, and collaboration. At K&A, we’re proud of the progress we’ve made—but we’re even more focused on what lies ahead: designing a better world, together. ■

If you would like to find out more information about anything you have read in Inside K&A, or to be put in touch with one of our experts, please email us at marketingandcommunications@khatibalami.com

www.khatibalami.com

